

Old English Figurative Expressions Ontology

Rafa, Isam and Lucía with Andon(T)

Input: lexical entry information regarding *shame* emotion

	A	B	C	D	E	F	G	H	I	J	K L	M	N
1	A+APSEN_ADJ	AEPS	?		1	1	glosses		3.4. SHAME	obscenity		CAUSATIVE METONYMY	NAKEDNESS
2	A+APSEN_N	AEPS	?	+afesne_n[1] +a13	3	3	glosses		3.4. SHAME	obscenity		CAUSATIVE METONYMY	NAKEDNESS
3	A+APSENNES_N	AEPS	?		1	1	glosses		3.4. SHAME	3.4. DISGRACE		CAUSATIVE METONYMY	NAKEDNESS
4	A+AWISCE-BEREND_ADJ	AEW	?		1	1	glosses		3.4. SHAME			CAUSATIVE METONYMY	NAKEDNESS
5	A+AWISCE_ADJ	AEW	?		1	1	glosses		3.4. SHAME			CAUSATIVE METONYMY	NAKEDNESS
6	A+AWISCE_N	AEW	?	+awisce_n^n[1]	8	7	glosses		3.4. SHAME			CAUSATIVE METONYMY	NAKEDNESS
7	A+AWISCLIC_ADJ	AEW	?		3	1	glosses		3.4. SHAME	3.4. DISGRACE		CAUSATIVE METONYMY	NAKEDNESS
8	A+AWISC-MOD_ADJ	AEW	?		1	4	poetry		3.4. SHAME	3.4. DISGRACE		CAUSATIVE METONYMY	NAKEDNESS
9	A+AWISCSNES_N	AEW	?	a+awisnes[1] +a+n9	6	6	glosses		3.4. SHAME	scandal	rep	CAUSATIVE METONYMY	NAKEDNESS
10	ABLYSIAN_VB	BLYS	Pride	*bhle:ablygisn_vbps[1]	15	14	glosses		3.4. SHAME	blushing		RESULTATIVE METONYMY	REDNESS IN THE FACE
11	ABLYSUNG_N	BLYS	Pride	*bhle:		1			3.4. SHAME	blushing		RESULTATIVE METONYMY	REDNESS IN THE FACE
12	A-F+ARAN_VB	F+AR	Pride	*per- af+arede	1	60	glosses		3.4. SHAME	3.3. FEAR		RESULTATIVE METONYMY	MENTAL DISTRESS
13	A-METAN_VB	METE		not found o	1			to paint wit3	3.4. SHAME			METAPHOR	A LIQUID SUBSTANCE (P
14	AREODIGN_VB	REOD	Pride	*reud areodigen[3] arx6	6	6	glosses		3.4. SHAME	red		RESULTATIVE METONYMY	REDNESS IN THE FACE
15	AR-LEAS_ADJ	AR	Pride	*ais- 'arleas_adj^n[11]	517	600			3.4. SHAME	wickedness		CAUSATIVE METONYMY	DISHONOUR
16	AR-LEASLICE_ADV	AR	Pride	*ais- 'arleaslice_adv[1]	76	90			3.4. SHAME	wickedness		CAUSATIVE METONYMY	DISHONOUR
17	AR-LEASNES_N	AR	Pride	*ais- 'arleasnis_n^n[1]	76	90			3.4. SHAME	wickedness		CAUSATIVE METONYMY	DISHONOUR
18	AR-WUR+TIAN_VB	AR	Pride	*ais- 'arweor+tian_vb	136	150			3.4. SHAME	2.2. REVEREN	hor	CAUSATIVE METONYMY	DISHONOUR
19	AR-WUR+TNES_N	AR	Pride	*ais- 'arweor+dnysse_	134	200			3.4. SHAME	2.2. REVEREN	hor	CAUSATIVE METONYMY	DISHONOUR
20	AR-WUR+TUNG_N	AR	Pride	*ais- 'arweor+dunga[2]	23	23	glosses		3.4. SHAME	2.2. REVEREN	hor	CAUSATIVE METONYMY	DISHONOUR
21	ARYDERAN_VB	REOD	Pride	*reud	3	3	glosses		3.4. SHAME			RESULTATIVE METONYMY	REDNESS IN THE FACE
22	A-SCREAMING_VB	SCREAM	Pride	*kam-asceamigen[2] a	10	13	glosses		3.4. SHAME			LITERAL	EMOTION
23	A-SW+AMAN_VB	SW+AM		asw+aman_vb[5]	12	16			3.4. SHAME	3.2. GRIEF		RESULTATIVE METONYMY	MENTAL DISTRESS
24	A-SWARNIAN_VB	SWARN	Pride	*swer aswarnian[3] as	11	11	glosses		3.4. SHAME	confusion		LITERAL	EMOTION
25	A-SWARNUNG_N	SWARN	Pride	*swer aswarnung[2] as	3	3	glosses		3.4. SHAME	confusion		LITERAL	EMOTION
26	BE-WIREON_VB	WRIG	Pride	*wer- bewirgen_vb^n[30	120	120	glosses		3.4. SHAME			METAPHOR	A PIECE OF CLOTH
27	BYSMOR_N	BYSMOR	PrGmc	*smx bysmor[4] bysm	120	150			3.4. SHAME	4.4. CONTEM	4.4.	CAUSATIVE METONYMY	DERISION
28	BYSMORUNG_N	BYSMOR	PrGmc	*smx bysmernung_n^n	18	40			3.4. SHAME	4.4. CONTEM	4.4.	CAUSATIVE METONYMY	DERISION
29	EDWIT_LIF_N	EDWIT	PrGmc	*edc	1	1	poetry		3.4. SHAME			4.4. CAUSATIVE METONYMY	DERISION
30	ED-WIT_N	EDWIT	PrGmc	*edcedwit[85] edwit	132	175	glosses		3.4. SHAME	3.4. DISGRAC	4.4.	CAUSATIVE METONYMY	DERISION
31	FACEN_N	FACN	PrGmc	*fak facen_n^n[2] fac	247	350	glosses		3.4. SHAME	fraud		CAUSATIVE METONYMY	FRAUD

Inicio Dibujar Disposición de página Fórmulas Datos Revisar Vista ¿Qué desea?


Pegar Calibri 11 A⁺ A⁻ [Bullets] [Numbered] [Decrease Indent] [Increase Indent] [Link] [Unlink] [Table] General [Grid] [Table] [Text Color] Formato condicional Dar formato como tabla Estilos de celda Insertar Eliminar Formato Ordenar y filtrar Buscar seleccionar

A10 COLUMN M: SEMANTIC SHIFT REPRESENTED (literal, metaphor, metonymy)

	A	B	C	D	E	F	G	H	I	J
1	COLUMN A: LEXICAL ENTRY (noun, adjective, verb, adverb)									
2	COLUMN B: LEXICAL ROOT (all derivational variants of the same root)									
3	COLUMN C: ETYMOLOGY (Pride or PrGmc)									
4	COLUMN D: LEMMAS (all the spelling and inflectional variants of the same lexeme found in the corpus)									
5	COLUMN E: CORPUS FREQUENCY (before semantic dissambiguation)									
6	COLUMN F: TOTAL FREQUENCY (total frequency of each lexeme according to the Dictionary of Old English, letter A-G)									
7	COLUMN G: TEXTUAL/DIALECTAL DISTRIBUTION (according to DOE)									
8	COLUMN H: COLLOCATIONS (non-lexicalised or 'synchronic' metaphors)									
9	COLUMNS I-L: MEANINGS (emotional meanings in CAPS, preceded by GEM numbers; non-emotional meanings in small letters)									
10	COLUMN M: SEMANTIC SHIFT REPRESENTED (literal, metaphor, metonymy)									
11	COLUMN N: ETYMOLOGICAL THEME (source domain, small caps)									
12										
13	Special Anglo-Saxon letters: A+A (for Æ); D+D (for Ð); T+T (for þ)									
14										
15										

Roadmap

1. Curating and standardizing the data
2. Converting such data to Ontolex
3. Linking to other resources:
 - <https://mappingmetaphor.arts.gla.ac.uk/map-english/>
 - <https://metanet.icsi.berkeley.edu/metanet/>
 - <http://ukc.disi.unitn.it/index.php/metonymy/>



Mapping Metaphor

with the *Historical Thesaurus*

[Home](#)
[Metaphor Map of English](#)
[Metaphor Map of Old English](#)
[About the project](#)
[Metaphor in E](#)

[Search the Metaphor Map of Old English](#)
[Browse the Metaphor Map of Old Eng](#)

Click on a category to highlight it. Click on a table heading to order the table. Click a second time to reverse the order.

Connections to / from category 2A01	Category 1	Direction	Category 2	Strength	Examples of metaphor
2A01: Mind	←	1B06: Biology	Weak	<i>foolish</i>	
2A01: Mind	←	1B11: Body parts	Strong	<i>brother, breast < breast</i>	
2A01: Mind	←	1B17: Internal organs	Weak	<i>womb < womb < breast</i>	
2A01: Mind	←	1B21: Sex organs	Weak	<i>womb < womb, breast < breast</i>	
2A01: Mind	←	1B22: Respiratory system	Strong	<i>ghost < ghost</i>	

2A01 Mind

Metaphor Strength:

Strong

Weak

Both

Download

Download

Key

History

Similar view

Change view

Click Sources

MetaNet

Home News People Bibliography

News

Now available to the public! - The MetaNet Wiki

Submitted by oanadavid on Thu, 07/23/2015 - 12:43

MetaNet has developed a large, structured inventory of conceptual metaphors and frames that is available to the public as of August 7, 2016. This

The MetaNet Wiki

The MetaNet Wiki is a repository of metaphors and frames that is available to the public as of August 7, 2016. This

Please visit our News tab for the latest about

THE HISTORICAL THESAURUS OF ENGLISH

Home Browse Search About the Thesaurus Scholarships and Prizes

Quick Search

Home > Search > Category Selection >

Back to search results Clear search

01 The world

02 The mind

02.01 Mental capacity

02.01.01 Spirituality

02.01.01.01 Mind, soul, spirit, heart

02.01.01.02 Mental elevation

02.01.02 Intellect

02.01.03 Consciousness

02.01.01.01 n.

MIND, SOUL, SPIRIT, HEART

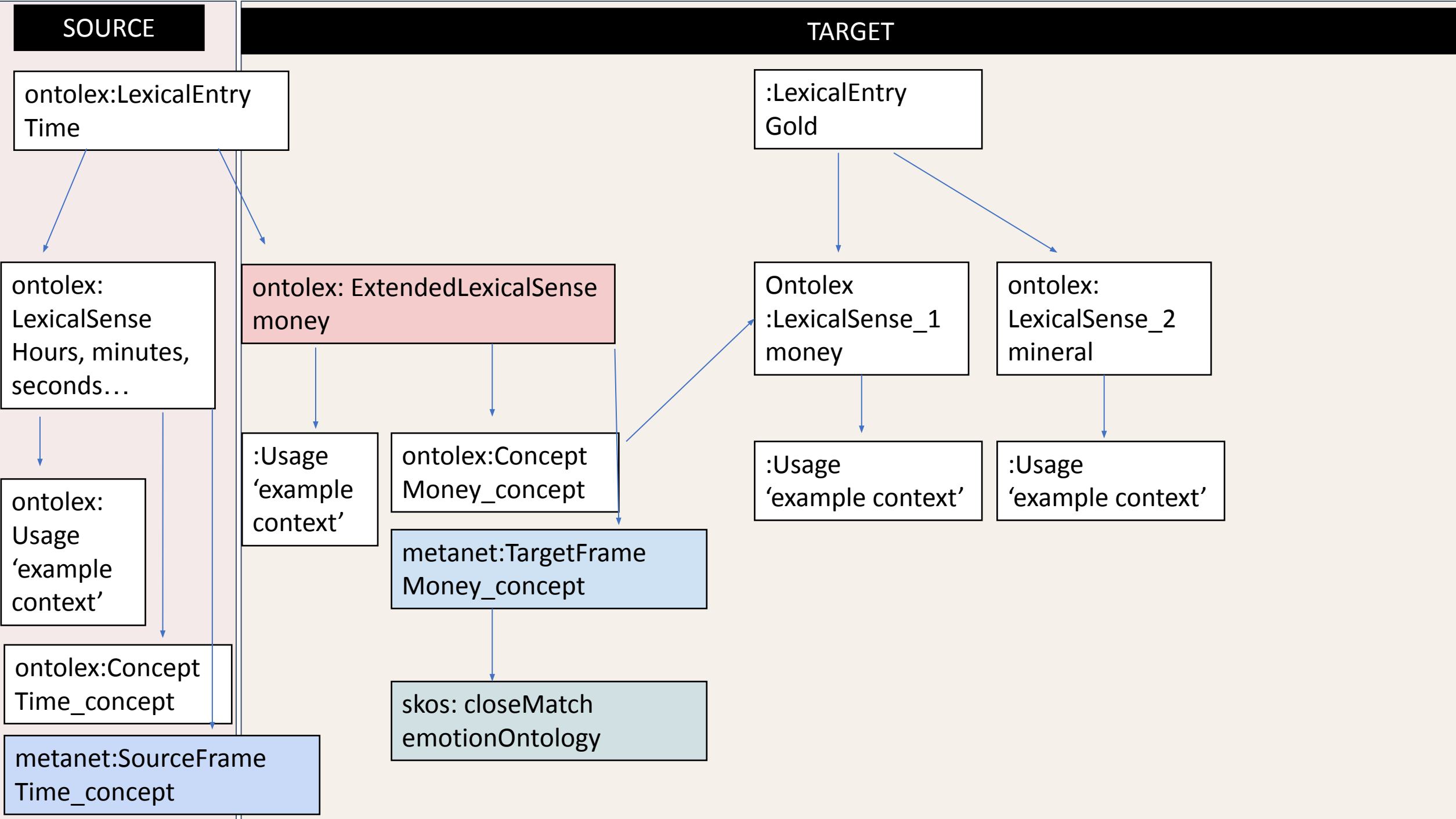
PARTS OF SPEECH: n. Mind, soul, spirit, heart adj. Having a soul vt. Soul

There are 45 words at this level, sorted by first attested date:

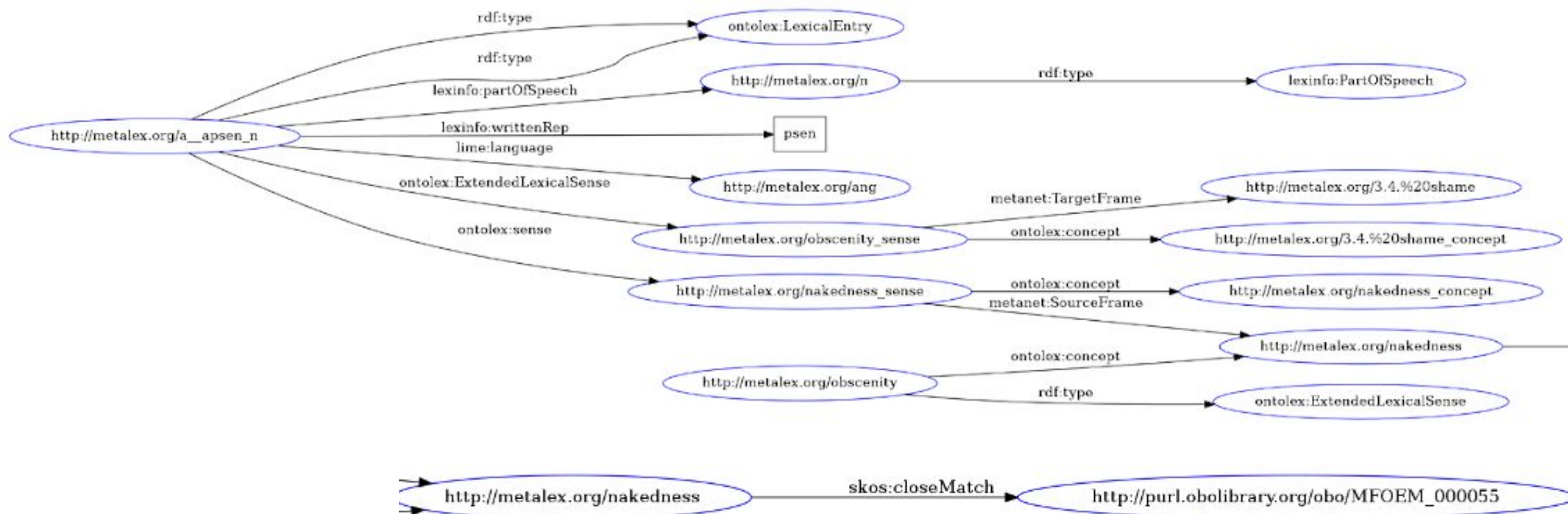
breosthord OE

Objectives

- ✓ Data analysis and discrimination.
- ✓ Data curation and standardization.
- ✓ Figurative meaning analysis and RDF conceptualization ¿How can we model figurative meaning?
- 🕒 RDF conversion.
- 🕒 Data mapping (Ontolex, EmotionOntology, MetaNet).
 - MISSING:
 - MetaphorMap
 - UKC
- 🕒 Data population.



RESULTING RDF



77 lexical entries covering figurative expressions (metonymy, metaphor and synaesthesia) of shame

FUTURE WORK

1. **Revise** RDF schema and particularly **ExtendedLexicalSense** property
2. **Enrich** the ontology with other emotions
3. **Link** with other resources (UKC Lexicon of Old English, Historical Metaphor Map)
4. **Populate** the ontology with further Lexical Entries (previous extraction)